

The Tisdale



1,370/1,440 SQ.FT.



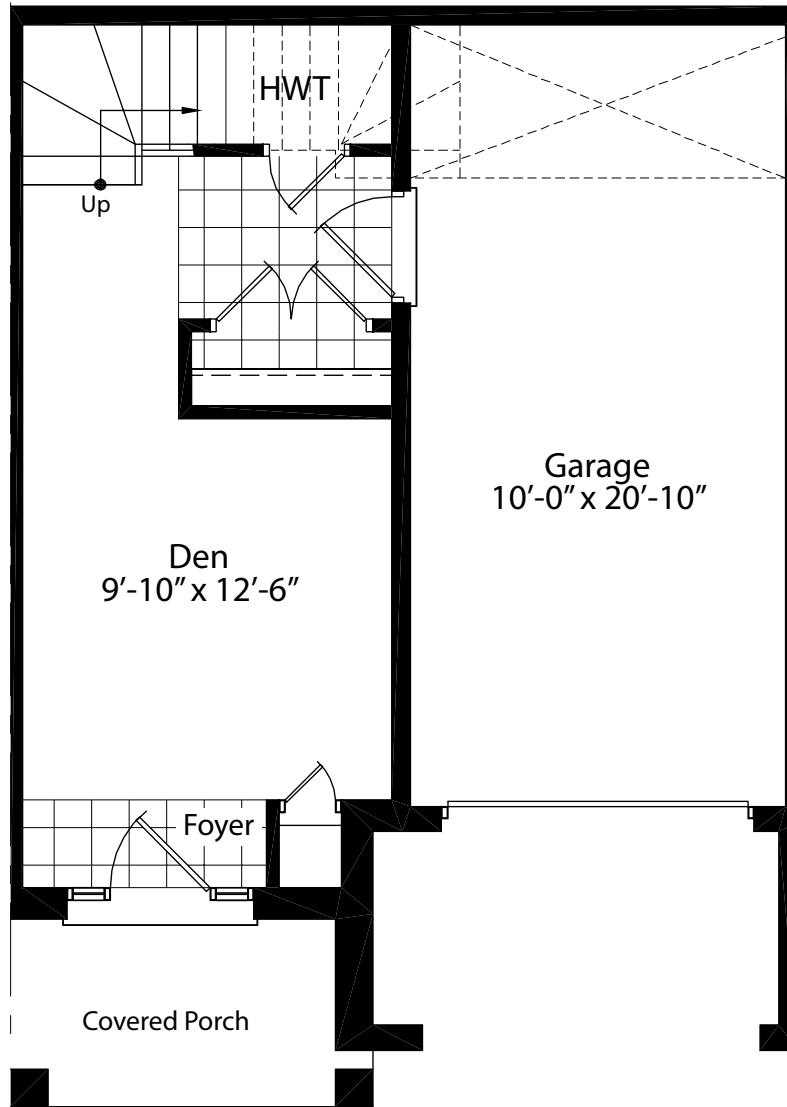
Artist's concept

Named after the oldest building in Ancaster, the Tisdale House, built in 1806.

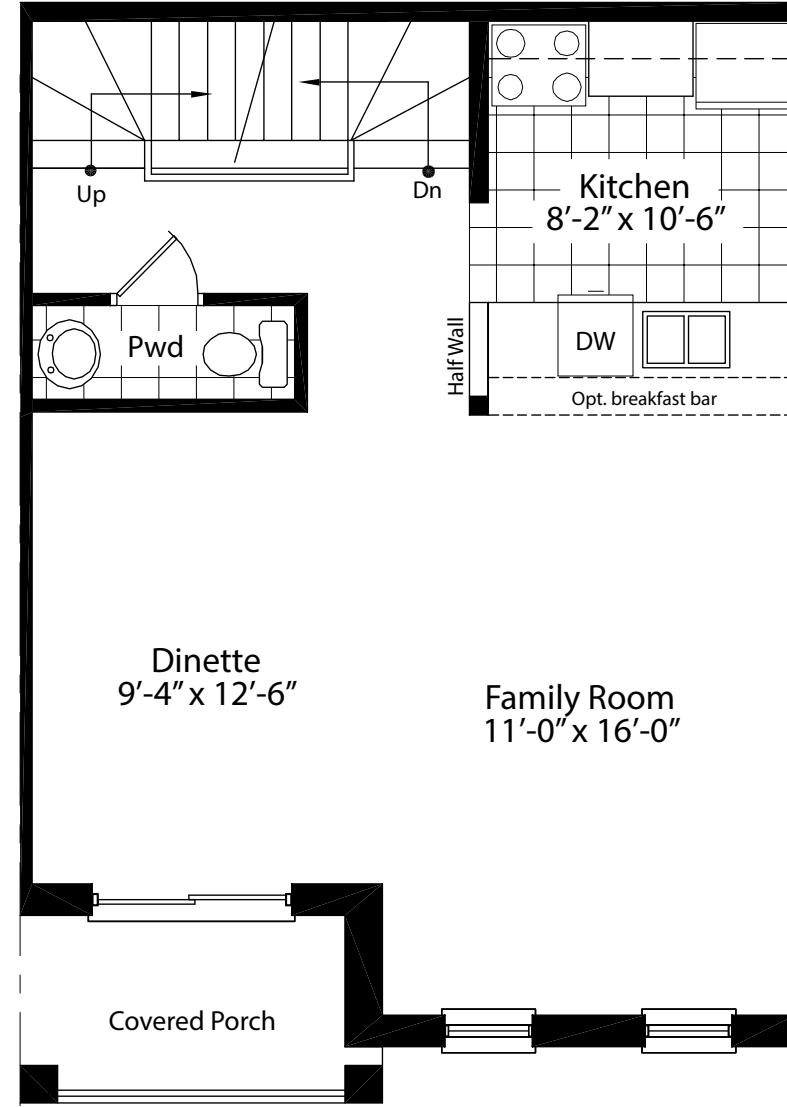


All house renderings and interior drawings are artist's conceptions. Material specifications and floor plans are subject to change without notice. All floor plans are approximate dimensions. NOTE: Actual usable floor space may vary from the stated floor areas. E. & O.E.

The Tisdale • 1,370 sq.ft.

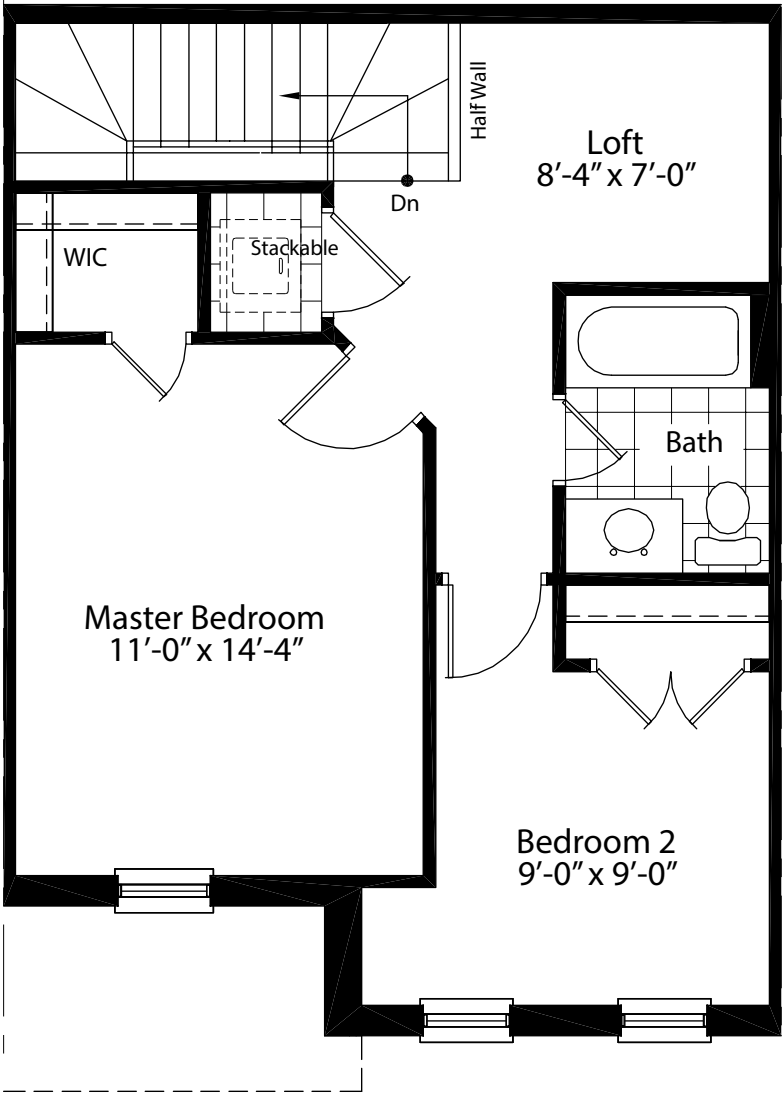


Main Floor Plan
9'-0" main floor ceiling height

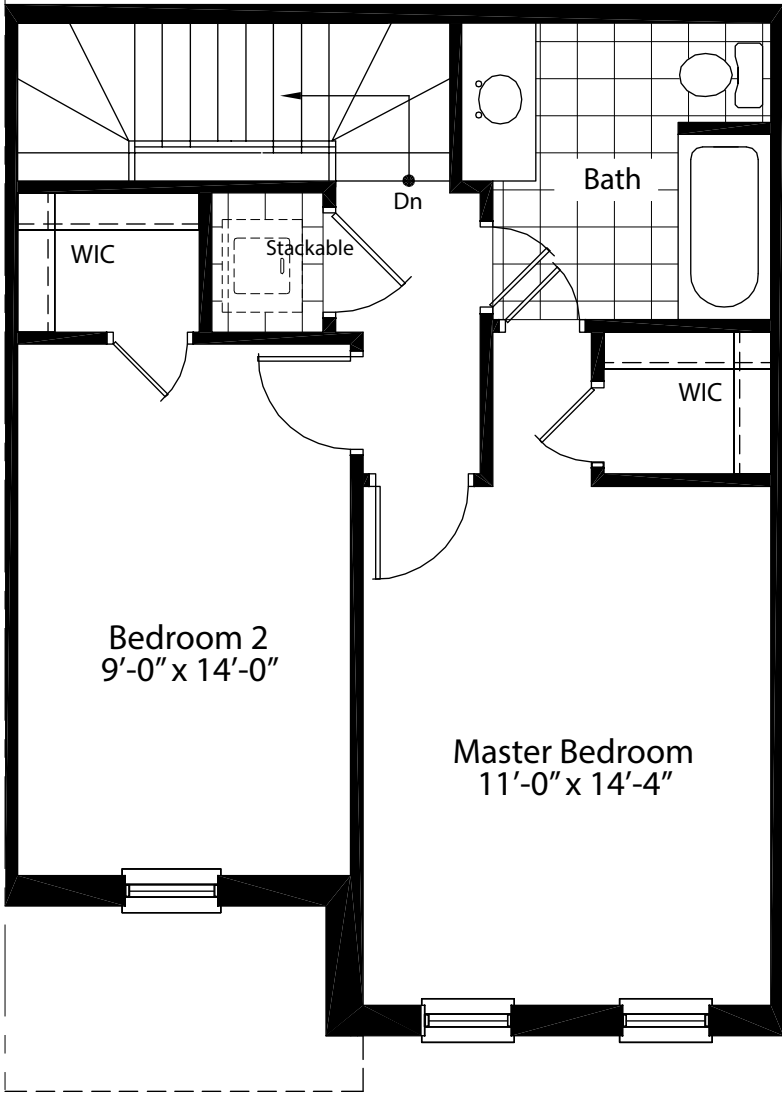


Second Floor Plan
9'-0" second floor ceiling height

The Tisdale • 1,370 sq.ft.

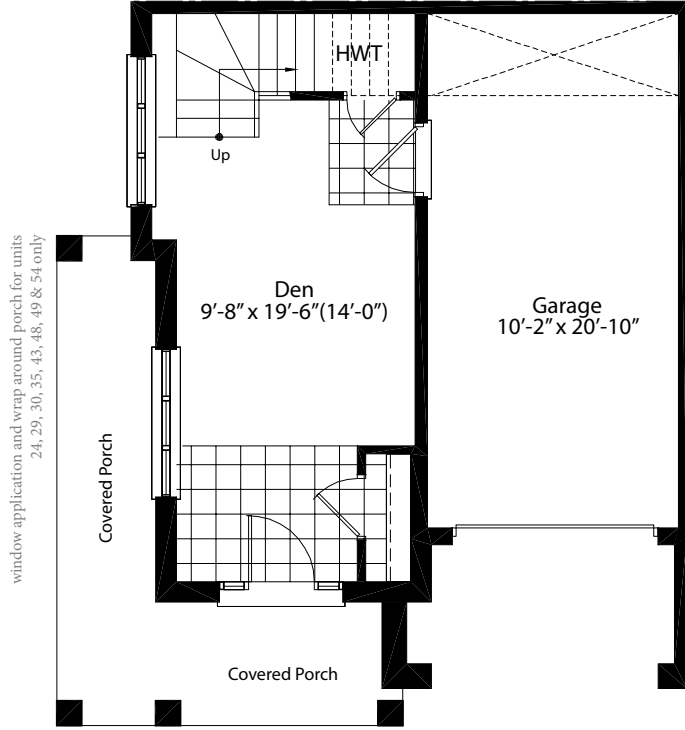


Third Floor Plan

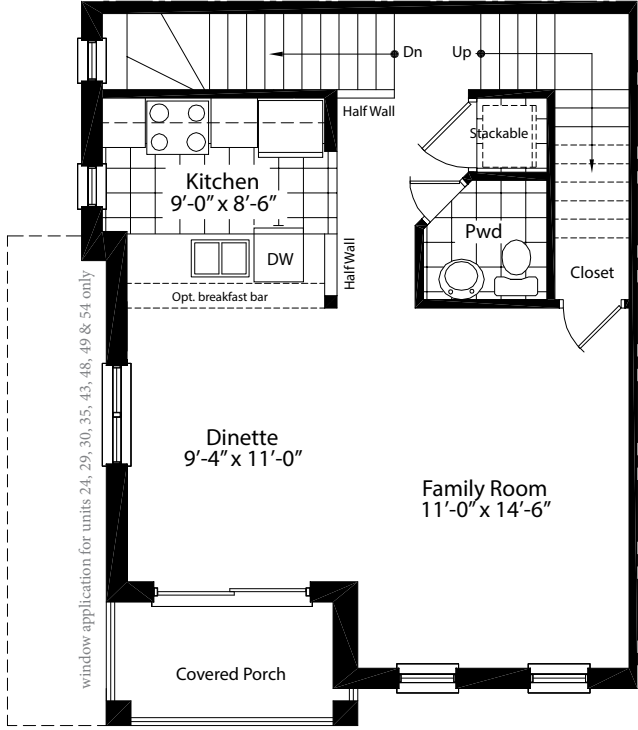


OPTIONAL Third Floor Plan

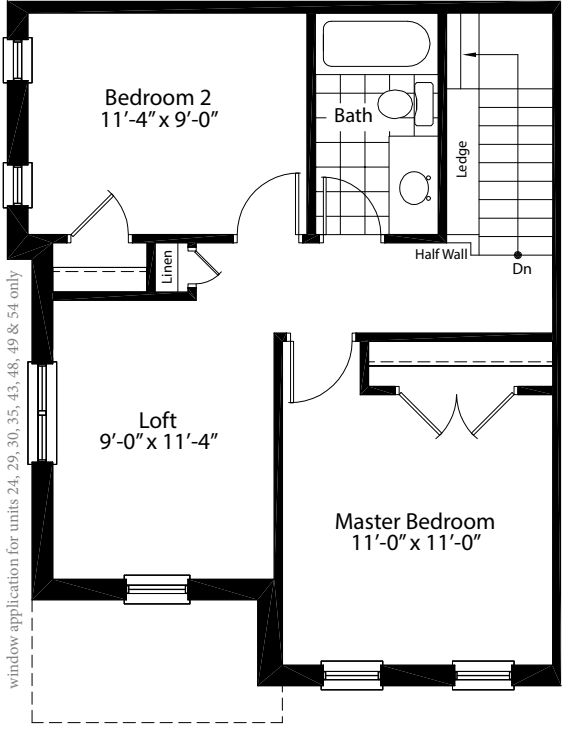
The Tisdale • 1,440 sq.ft.



Main Floor Plan 9'-0" main floor ceiling height

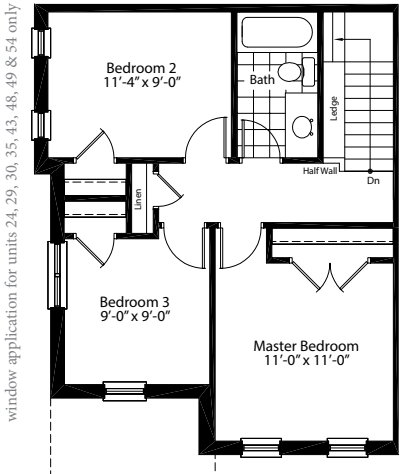


Second Floor Plan 9'-0" main floor ceiling height

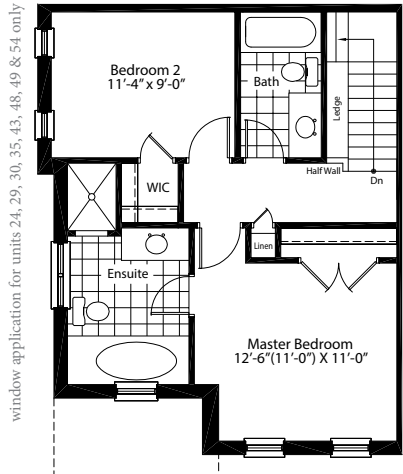


Third Floor Plan

Special End Unit 1,440 sq.ft.



OPTION 1 Third Floor Plan



OPTION 2 Third Floor Plan

All house renderings and interior drawings are artist's conceptions. Material specifications and floor plans are subject to change without notice. All floor plans are approximate dimensions. NOTE: Actual usable floor space may vary from the stated floor areas. E. & O.E